



CYTECH

COMFORT TO KNX

UCM/KNX2 INTERFACE MODULE

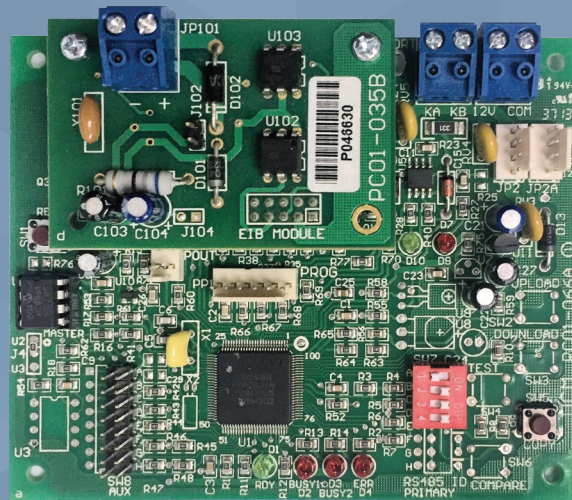


SEAMLESS 2-WAY INTEGRATION OF KNX AND COMFORT INTRUDER ALARM



BENEFITS

- KNX-compatible intruder alarm
- Control KNX devices by telephone menu or mobile apps
- Conditional logic engine using if/then/else
- Schedules to control any combination of KNX devices on any day and at any time
- Infrared signal control of home appliances and air conditioners
- KNX touchscreens can be used to arm and disarm the alarm system using the users' PIN codes, and can monitor the status of doors, windows and sensors
- Optional SMS control
- Gateway to other automation systems such as C-Bus, Zwave, Modbus.



UCM/KNX2 INTERFACE MODULE

ABOUT COMFORT

Comfort is a practical and affordable integrated intruder alarm and automation system with 8 inputs and 8 outputs (both expandable to 96) with dialout to 8 phone numbers, time programs, iOS/Android control, and is capable of customisation by programmable logic conditions.

THE COMFORT INTRUDER ALARM

Map alarm events and conditions to KNX
Group addresses:

- Alarm set to *Away, Night, Day* or *System Unset*
- System in *Alarm* or *Normal* state
- System conditions: *Low Battery, Power Failure, Phone Line Cut, Tamper*
- *Open/Close* state of doors, windows and motion sensors.

Programme KNX Objects to:

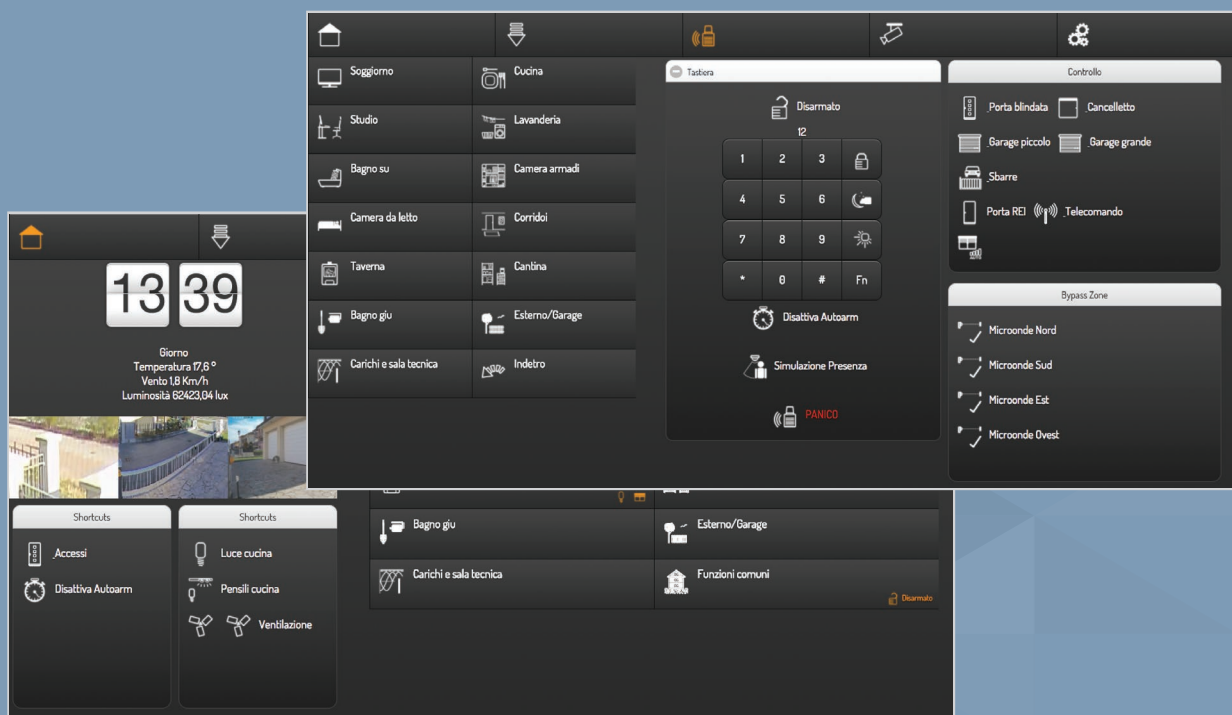
- Arm the alarm to *Away, Night* or *Day*
- *Bypass* and *Unbypass* alarm zones
- Emulate an alarm keypad on a KNX touchscreen to *Set* and *Unset* the alarm
- Use KNX motion sensors as alarm sensors, as well as the reverse: ie assign KNX group addresses to alarm sensors.

COMFORT



SPECIFICATION

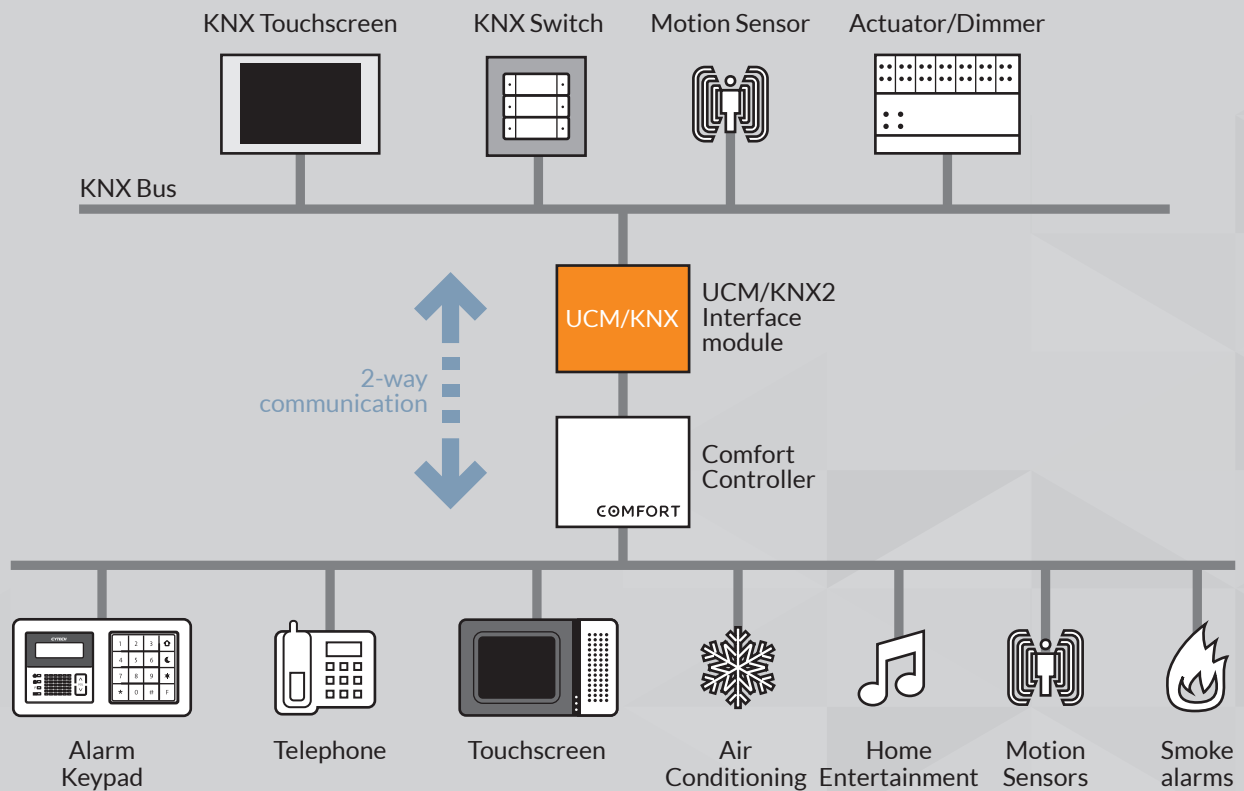
- Size (UCM/KNX2 PCB) 108 x 88 mm
- Connection (KNX) KNX Bus Cable
- Connection (Comfort) RS485 Bus
- Current (from Comfort) 50 mA
- KNX Objects supported EIS1 (1-bit), EIS2 (4-bit), EIS3 (Time), EIS4 (Date),
EIS5 (Float), EIS6 (1 byte), EIS10 (2 bytes)
- Physical Address 1.1.1 to 1.15.255
- KNX to Comfort Addresses 255
- Comfort to KNX Registers Inputs, Outputs, Alarms, Flags, Sensors, Counters



CONTROL

An example of KNX application software controlling Comfort via the UCM/KNX2 Interface Module

TYPICAL SCHEMATIC



Cytech Technology Pte Ltd
 55 Ubi Ave 1 #07-04, Singapore 408935
 Phone: +65 6846 9701
 Email: info@cytech.biz
 Web: www.cytech.biz
 Reg: 199506853M

CYTECH